



ABINGDON
SCIENCE
PARTNERSHIP

Skeletons and Bones

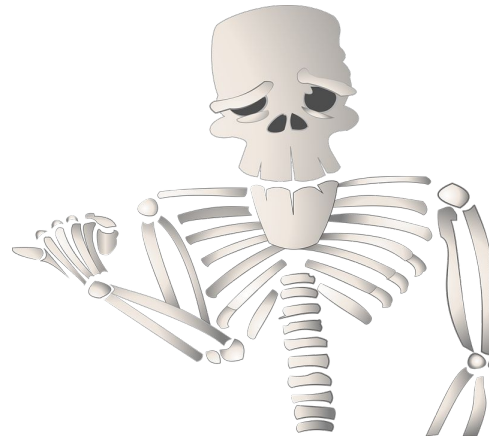
with
Mr. Bliss



Introducing the Skeleton

Watch this clip then stop the main video and try the challenges

[Introducing Skeletons Video](#)



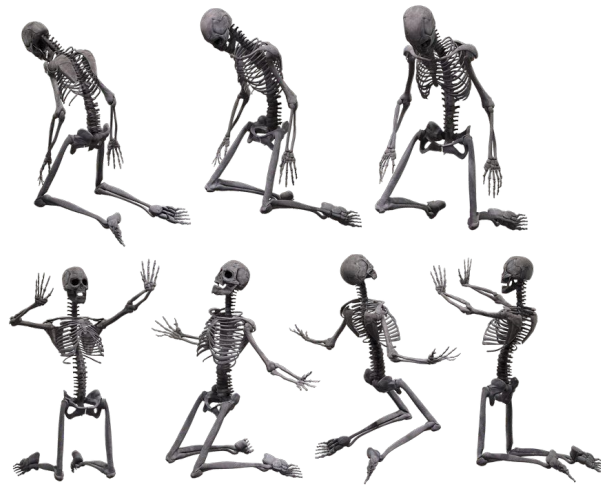
Types of skeleton challenge tasks:

1. Make two lists or a table of animals with exoskeletons and endoskeletons (have a competition with someone else to see who can make the longest lists)
2. Find out what exoskeletons and endoskeletons are made of – there may be different types
3. Draw and label a picture of animals with an exoskeleton and an endoskeleton

All About Bones

Watch this clip then stop the main video and try the challenges

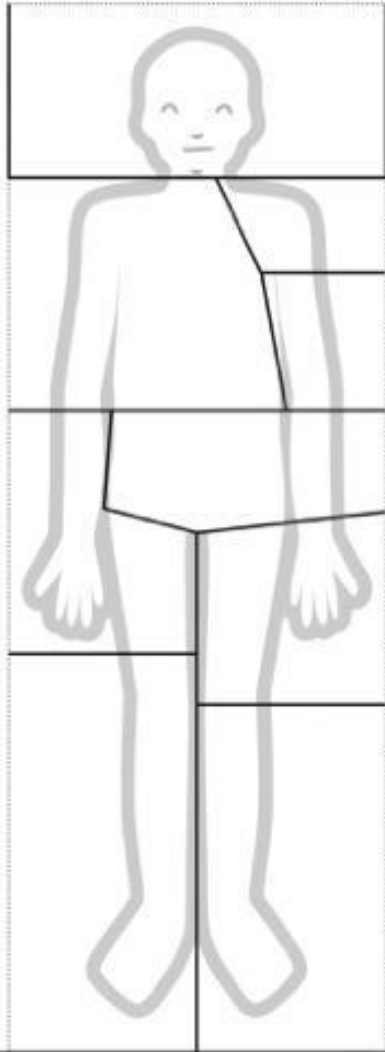
[All About Bones Video](#)



Human skeleton challenge tasks. These are all on the next few slides for you to print out or you could try drawing your own pictures if you can't print them:

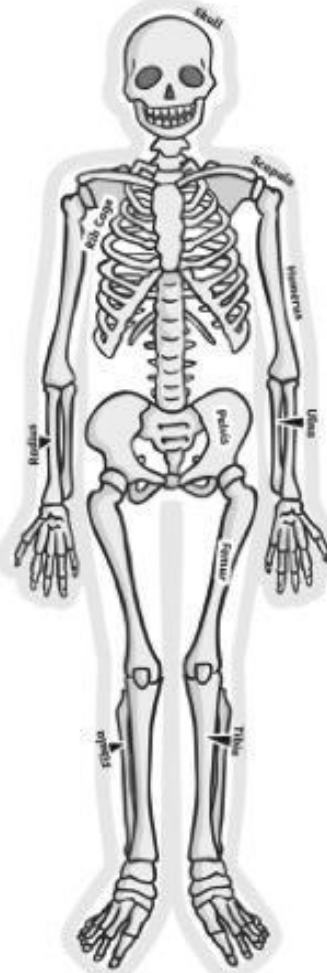
1. Make a lift the flap skeleton picture
2. Cut and paste the names of the main bones
3. Answer Mr.Bliss's questions about skeletons and skulls

Human Skeleton



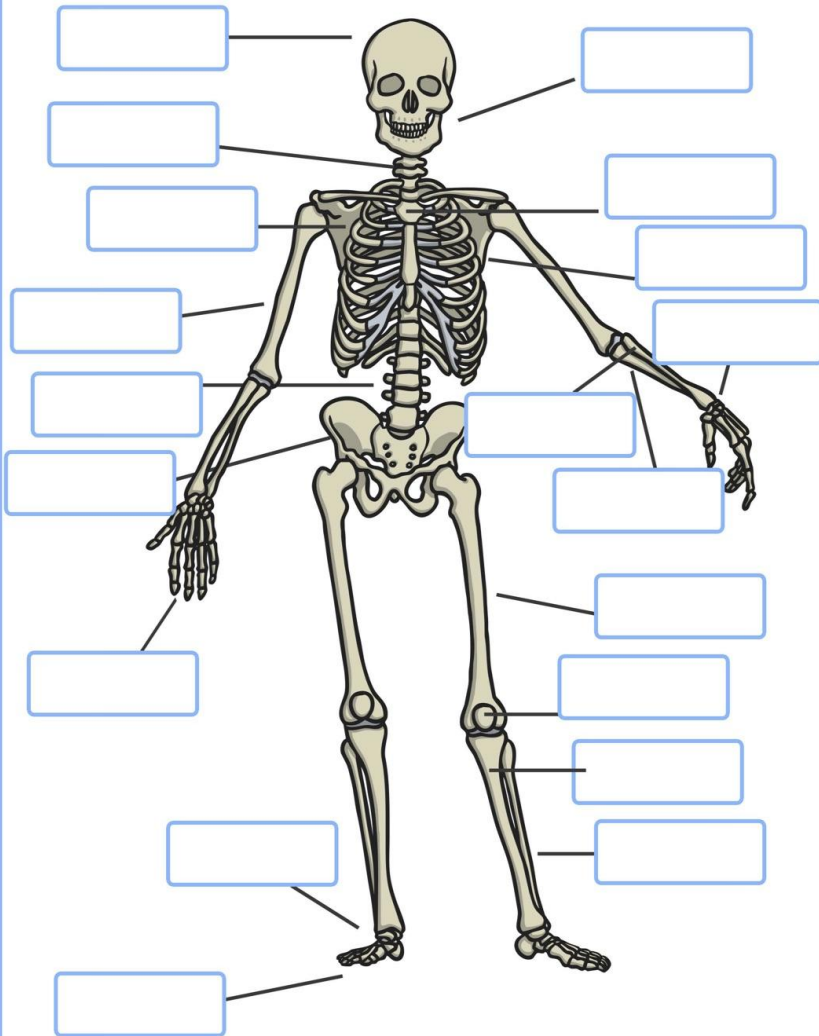
twinkl.co.uk

Glue page 1 here.



twinkl.co.uk

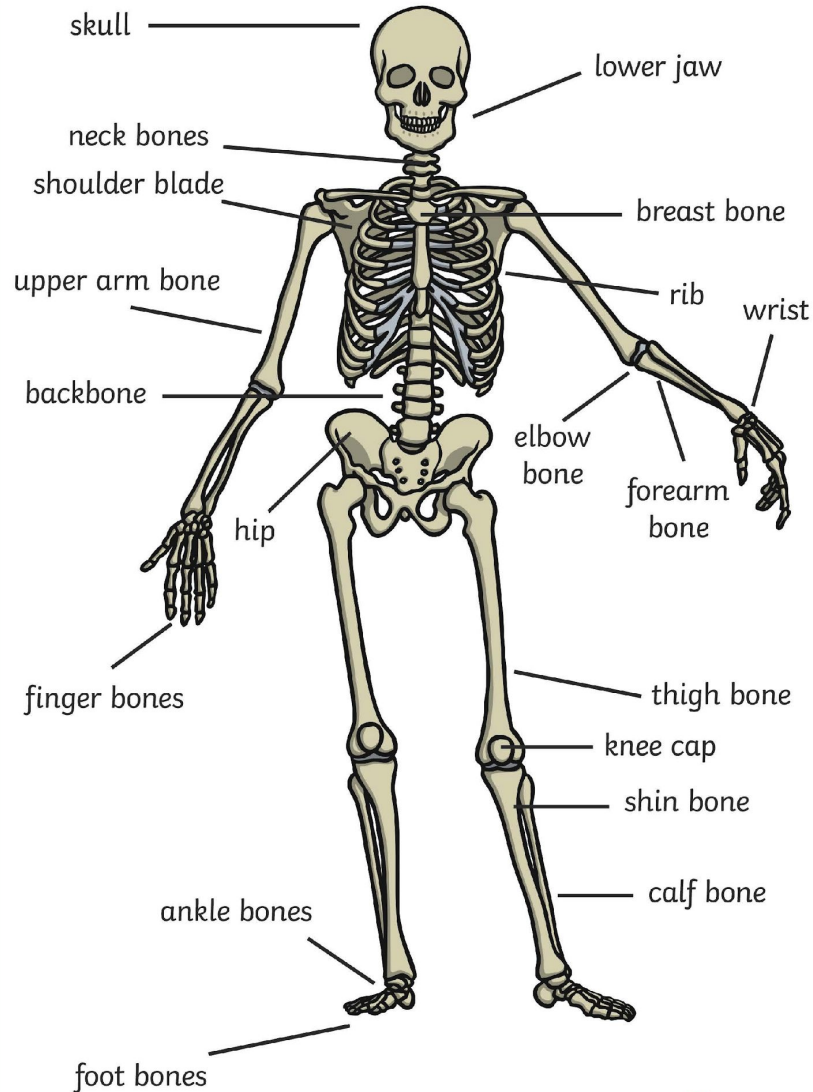
The Human Skeleton



The Human Skeleton

- | | |
|----------------|--------------|
| skull | breast bone |
| neck bones | rib |
| shoulder blade | forearm bone |
| upper arm bone | elbow bone |
| backbone | wrist |
| hip | thigh bone |
| finger bones | knee cap |
| ankle bones | shin bone |
| foot bones | calf bone |
| lower jaw | |

The Human Skeleton

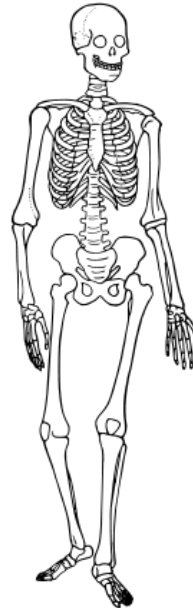


Answers

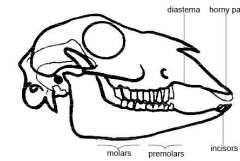
Skeletons & Skulls

Name _____

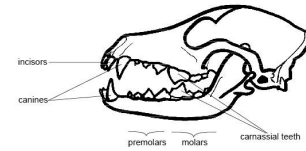
1. What is a **skeleton**?
2. What is the difference between an **exoskeleton** and an **endoskeleton**? Give an example of an animal with each type of skeleton.
3. What are the **functions** of the human skeleton?
4. What is a **hydrostatic** skeleton? Give an example of an animal with a hydrostatic skeleton.



What bones do you know in **your** skeleton?



What adaptations are in a **herbivore** skull such as a **sheep**?

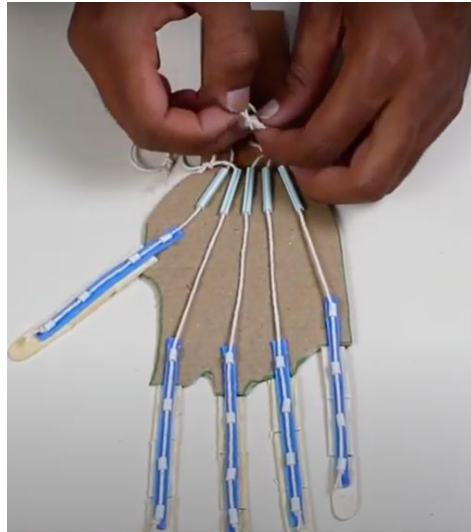


What adaptations are in a **carnivore** skull such as a **dog**?

Types of Joints

Watch this clip then stop the main video and try the challenges

[Types of Joints Video](#)



Types of joints challenges:

1. Count all the joints in your body – even better try to classify them into the types of joint Mr.Bliss just told you about (hinge, ball and socket, suture, gliding)
2. Make a joint model like the one in the picture – go to this video for the full instructions:

<https://www.youtube.com/watch?v=CJRxZmSIhTA>

Broken Bones and Dislocations

Watch this clip then stop the main video and try the challenges

[Dislocations Video](#)

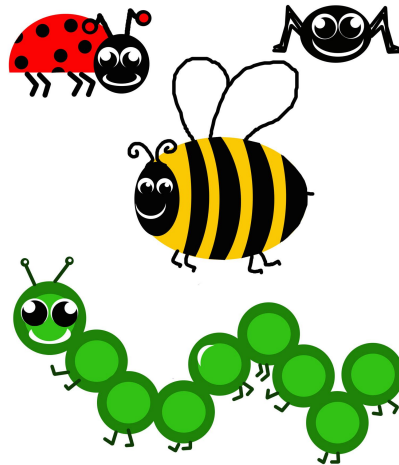


Broken bones and dislocation challenges:

1. Find out how to give first aid to someone who breaks a bone then write a poster or leaflet to explain how to do this for your friends or people you live with
<https://www.redcross.org.uk/first-aid/learn-first-aid/broken-bone>
2. Draw and label a design for a device that would help someone who had broken an arm or a leg while the broken bone is mending.

Minibeasts and Skeletons

Minibeasts and Skeletons



Watch this clip then stop the main video and try the challenges

This app will help you identify minibeasts:
<https://www.inaturalist.org/>

This is a fantastic website with lots of great wildlife detective guides:
<https://www.wildlifewatch.org.uk/spotting-sheets>

Minibeasts challenges:

1. Go on a minibeast hunt, inside or out. How many can you find in your home or outside it?
2. This website shows you how to make a minibeast identification dial
<https://assets.sussexwildlifetrust.org.uk/Files/m3-bug-dial-ks2.pdf>
3. Make a nature notebook with pictures and lists of the minibeasts you find – write down what types of skeletons they have; where you find them and anything else you notice about them.

Skeletons in Owl Pellets

Watch this clip then stop the main video and try the challenges

[Owl Pellets Video](#)



Investigating owl pellets:

If you find any owl pellets yourself you must handle them carefully by following instructions like these:

<https://www.wildlifewatch.org.uk/dissecting-owl-pellets>

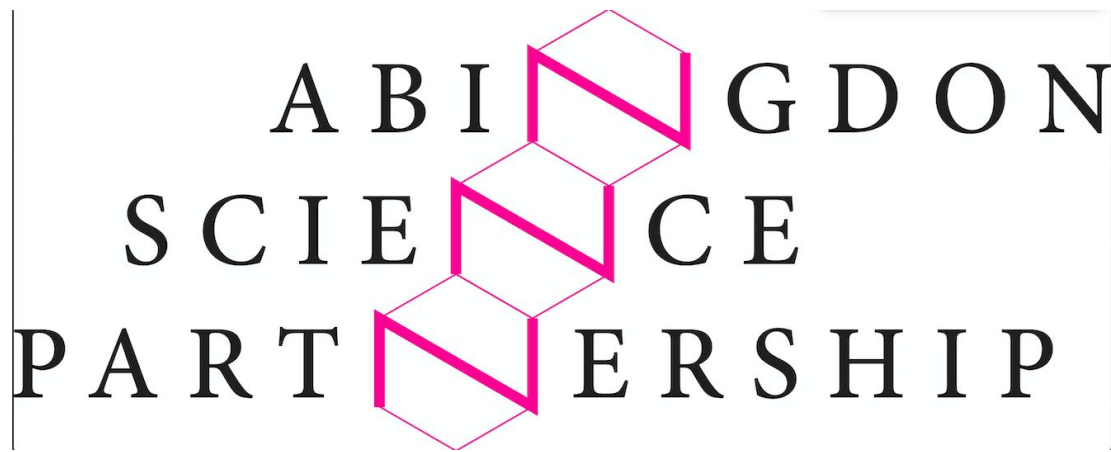
If you are able to, you can buy owl pellets from owl sanctuaries like this one:

<https://www.owl-help.org.uk/pellet-detectives>

This is a great game you can play about woodland food chains:

<https://www.newforestnpa.gov.uk/app/uploads/2018/08/Woodland-Food-Chain-game.pdf>

Thanks for coming to this



workshop. We look forward to seeing you
again soon.